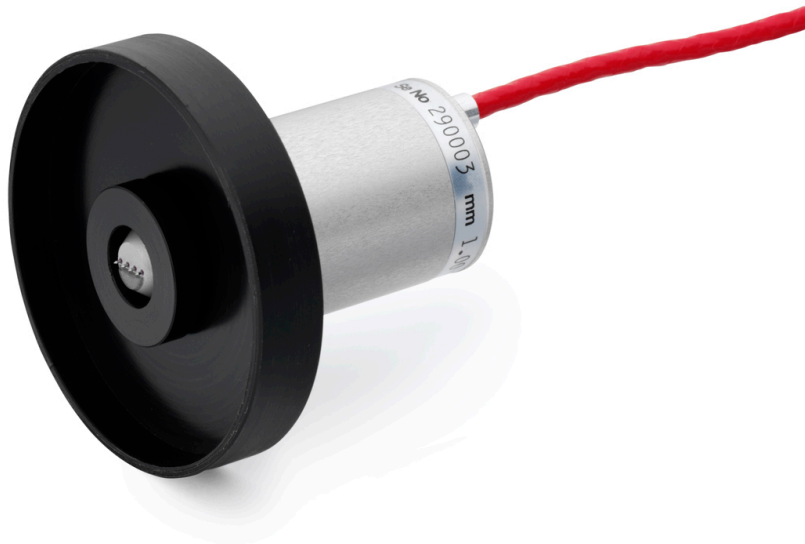


Jandel Engineering Limited



Jandel plastic light shroud

Jandel Engineering Limited supplies an optional press-fit light shield for times when it is necessary to shield samples from light, perhaps because they are photo-sensitive. It is offered as shown in the picture above. It is a two piece design, allowing the shield to be used on samples between 0.0 and 4.0mm thick and 50mm diameter.

The Light Shield Shroud can be used on the Multiposition, Microposition and Multiheight Probe Stands manufactured by Jandel.

The central piece of the Light Shield Shroud is a stability shroud (see stability shroud leaflet). This means that the probe can be held by hand, whether or not the outer section of the assembly is in place.

If you require any further information on the Jandel Stability Shroud please do not hesitate to contact us using the details below