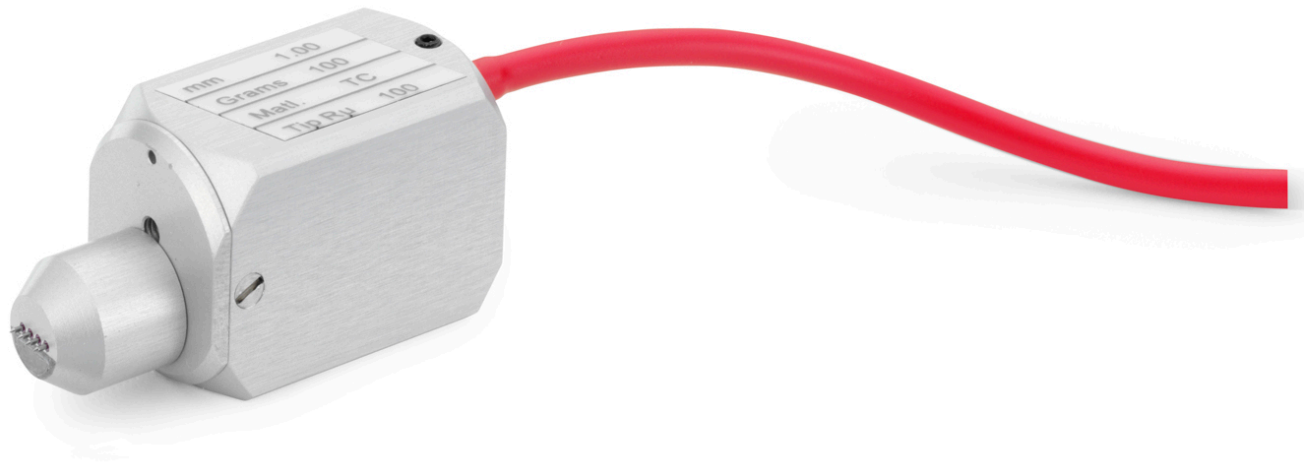


Jandel Engineering Limited



Compact Probe Head

(Suitable for use on Veeco and GRQ equipment)

Jandel Engineering Limited manufactures the Compact Probe for use on Veeco FPP50000 and FPP100 equipment. It is also suitable for use on GRQ equipment or to replace square bodied probe heads manufactured by Alessi.

Some Veeco equipment requires a differently shaped probe (cartridge with lead). Please let us know if you are unsure which probe you require.

All Jandel probes are built to a high level of mechanical accuracy. Specifications for radii, spacing and planarity are verified by video inspection system and optical interferometer. Loads are verified by electronic force gauge. Each probe has upper and lower jeweled needle guides.

<i>Probe spacing</i>	1.00mm, 1.27mm, 1.591mm (needle to needle)
<i>Tolerance</i>	+/- 10 microns
<i>Arrangement</i>	Linear or square array
<i>Needles</i>	Tungsten carbide 0.4mm diameter
<i>Needle option</i>	50% Osmium alloy tips are available
<i>Radii</i>	12.5, 25, 40, 100, 150, 200, 300, 500 microns
<i>Retraction to pad</i>	0.75 mm
<i>Planarity</i>	+/- 0.025mm or better
<i>Loads</i>	Adjustable within the range 30-70g (low) or 70-150g (high)
<i>Electrical leakage</i>	10¹³ ohms resistance between needles at 500 volts

If you require any further information on the Jandel Compact probe please do not hesitate to contact us using the details below

Jandel Engineering Limited, Grand Union House, Leighton Road, Leighton Buzzard, LU7 1LA

Telephone: +44 (0) 1525 378554 Fax: +44 (0) 1525 381945 Email: info@jandel.co.uk